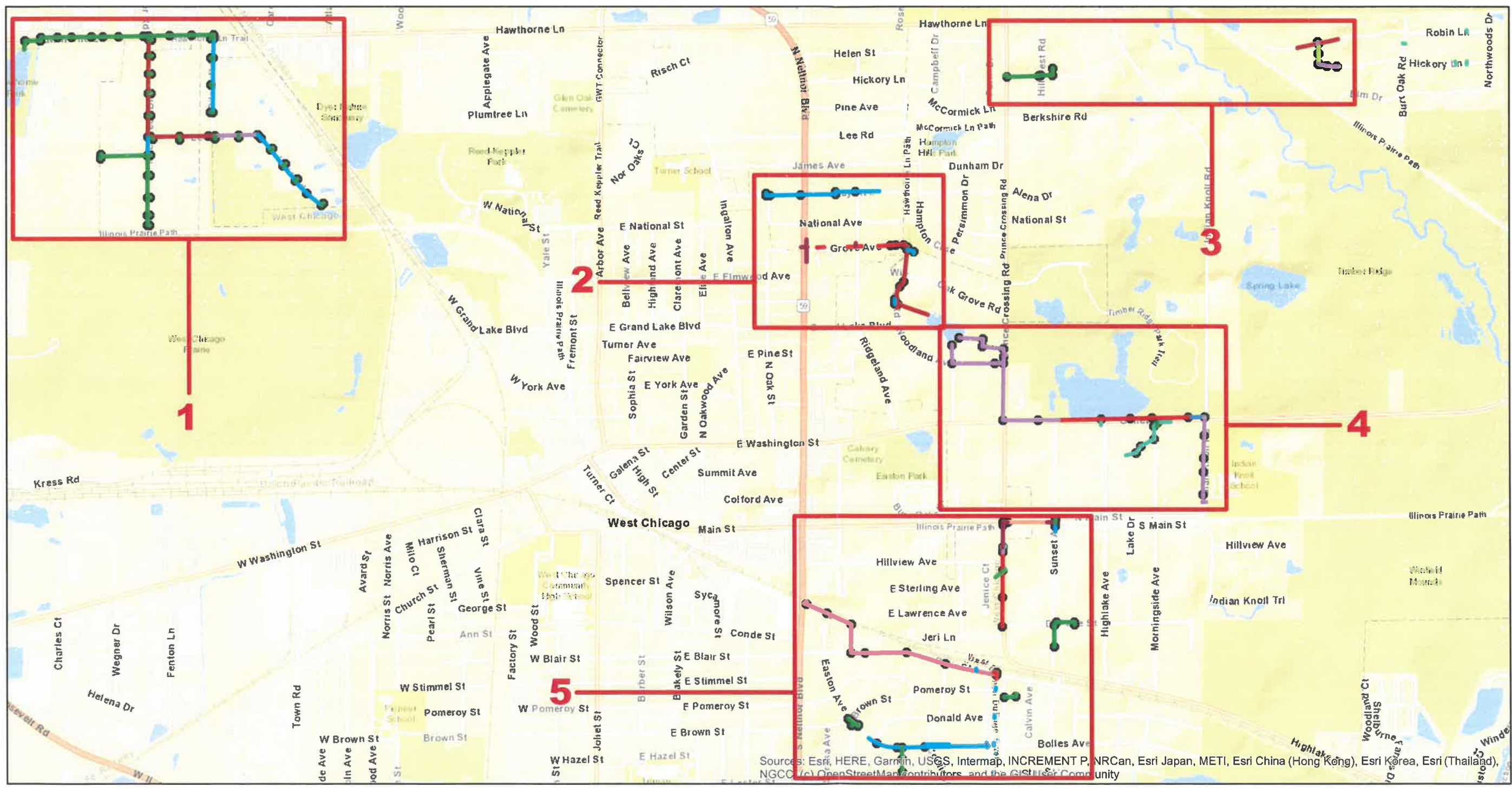


LOCATION EXHIBIT

WINFIELD TOWNSHIP 2018 ROAD DISTRICT ASSET MANAGEMENT STORM & DRAINAGE

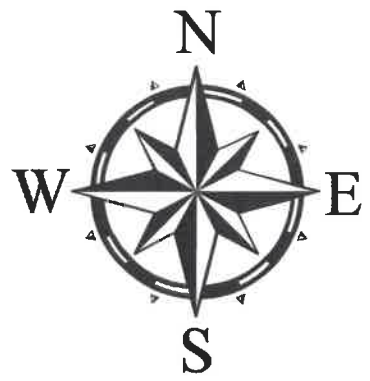


515 Warrenville Rd. • Lisle, IL 60532
(630) 271-0770 • (630) 271-0774 Fax



Sources: Esri, HERE, Garmin, USGS, Intermap, INCREMENT P, NRCan, Esri Japan, METI, Esri China (Hong Kong), Esri Korea, Esri (Thailand), NGCC, (c) OpenStreetMap contributors, and the GIS User Community

WINFIELD TOWNSHIP HIGHWAY DEPARTMENT
JOHN S. DUSZA- HIGHWAY COMMISSIONER



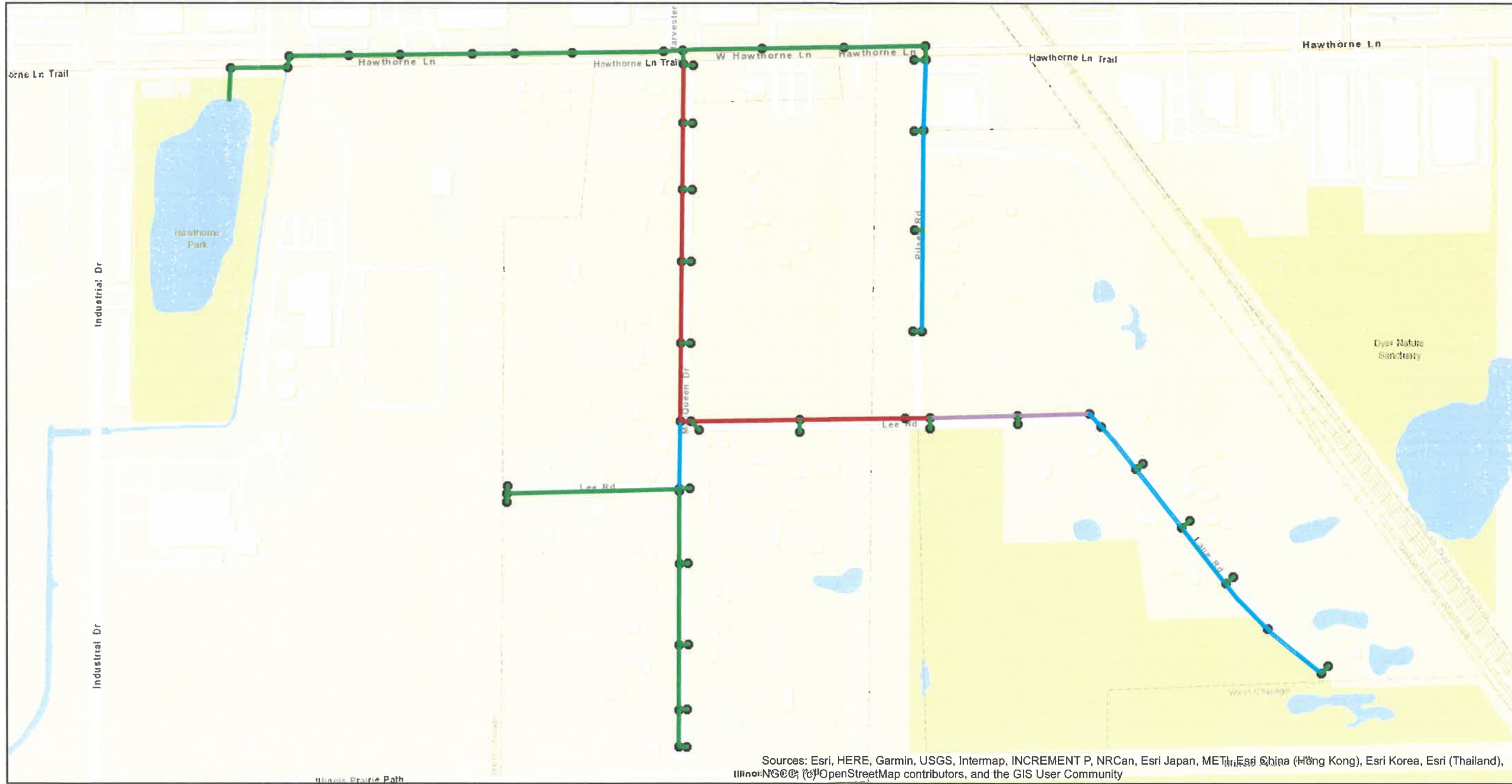
LOCATION EXHIBIT

WINFIELD TOWNSHIP 2018 ROAD DISTRICT ASSET MANAGEMENT STORM & DRAINAGE

SECTION 1



515 Warrenville Rd. • Lisle, IL 60532
(630) 271-0770 • (630) 271-0774 Fax

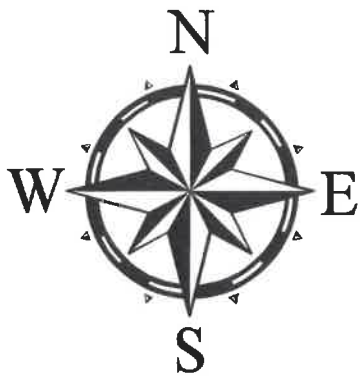


Legend

- 6in
- 8in
- 10in
- 12in
- 15in
- 16in
- 18in
- 21in
- 24in
- 26in
- 27in
- 30in
- 35in
- 36in
- 38in
- 42in
- 48in
- 60in
- 72in
- Unknown
- Structures

Sources: Esri, HERE, Garmin, USGS, Intermap, INCREMENT P, NRCan, Esri Japan, METI, Esri China (Hong Kong), Esri Korea, Esri (Thailand), Swisstopo, IGN, etc., OpenStreetMap contributors, and the GIS User Community

WINFIELD TOWNSHIP HIGHWAY DEPARTMENT
JOHN S. DUSZA- HIGHWAY COMMISSIONER

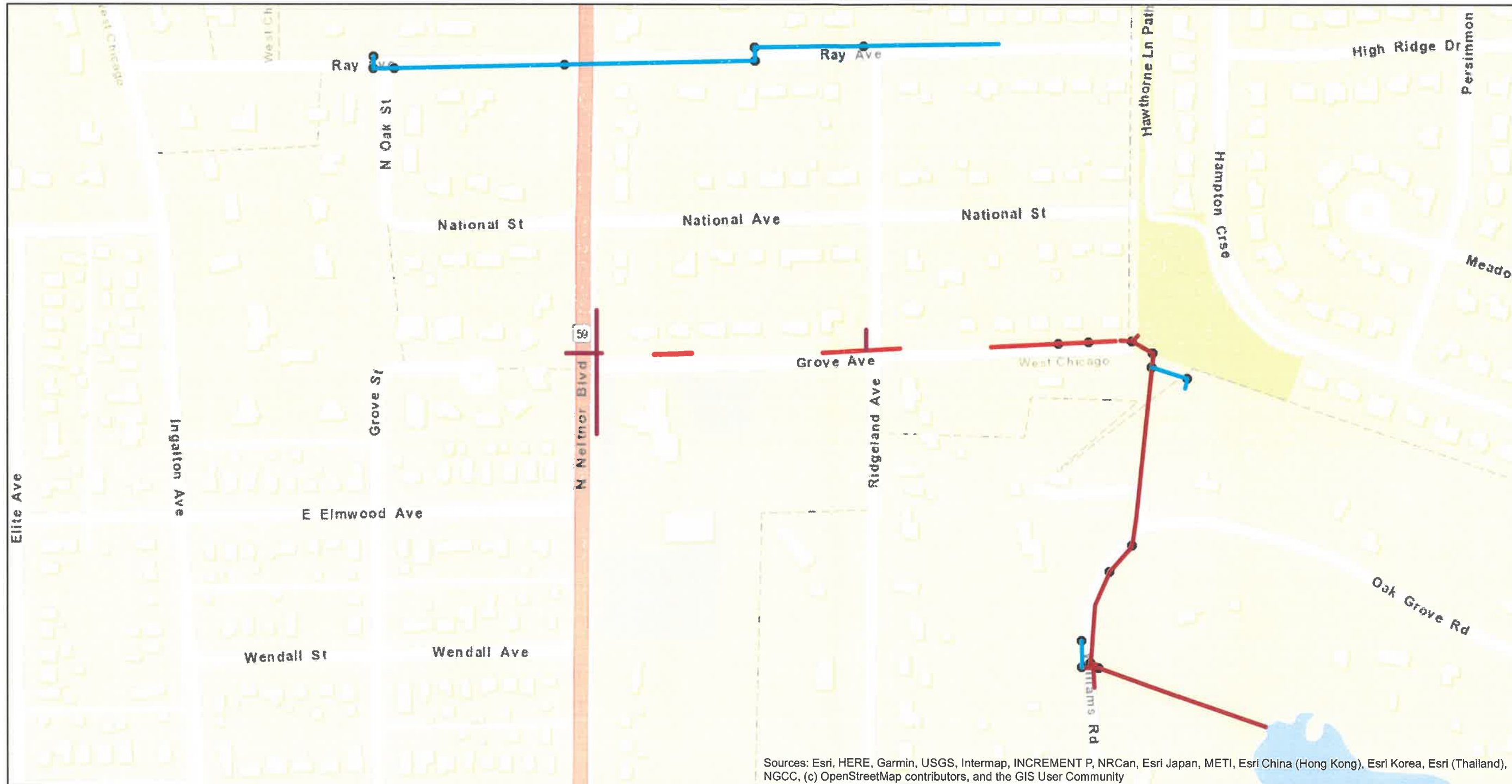


LOCATION EXHIBIT

WINFIELD TOWNSHIP 2018 ROAD DISTRICT ASSET MANAGEMENT STORM & DRAINAGE SECTION 2



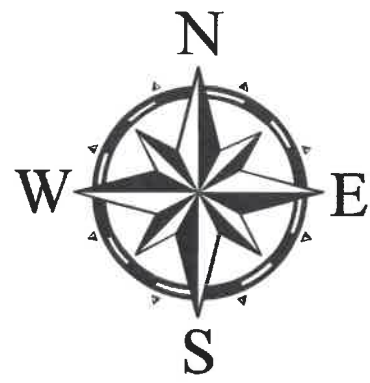
515 Warrenville Rd. • Lisle, IL 60532
(630) 271-0770 • (630) 271-0774 Fax



Legend

- 6in
- 8in
- 10in
- 12in
- 15in
- 16in
- 18in
- 21in
- 24in
- 26in
- 27in
- 30in
- 35in
- 36in
- 38in
- 42in
- 48in
- 60in
- 72in
- Unknown
- Structures

WINFIELD TOWNSHIP HIGHWAY DEPARTMENT
JOHN S. DUSZA- HIGHWAY COMMISSIONER



LOCATION EXHIBIT

WINFIELD TOWNSHIP 2018 ROAD DISTRICT ASSET MANAGEMENT STORM & DRAINAGE SECTION 3



515 Warrenville Rd. • Lisle, IL 60532
(630) 271-0770 • (630) 271-0774 Fax

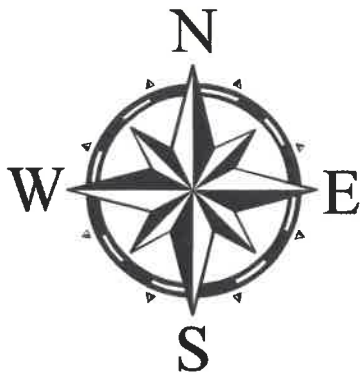


Legend

- 6in
- 8in
- 10in
- 12in
- 15in
- 16in
- 18in
- 21in
- 24in
- 26in
- 27in
- 30in
- 35in
- 36in
- 38in
- 42in
- 48in
- 60in
- 72in
- Unknown
- Structures

Sources: Esri, HERE, Garmin, USGS, Intermap, INCREMENT P, NRCan, Esri Japan, METI, Esri China (Hong Kong), Esri Korea, Esri (Thailand), NGCC, (c) OpenStreetMap contributors, and the GIS User Community

WINFIELD TOWNSHIP HIGHWAY DEPARTMENT
JOHN S. DUSZA- HIGHWAY COMMISSIONER



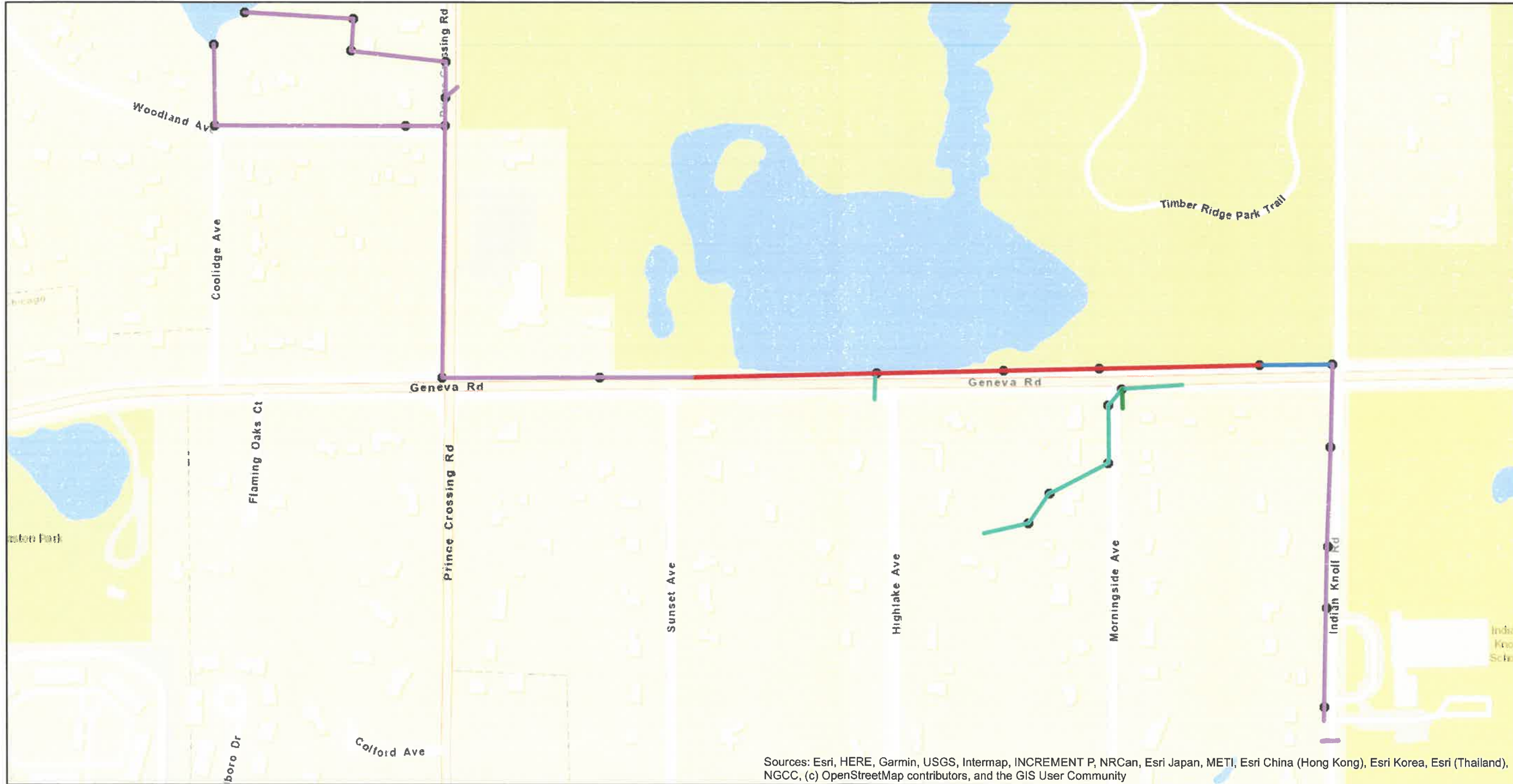
LOCATION EXHIBIT

WINFIELD TOWNSHIP 2018 ROAD DISTRICT ASSET MANAGEMENT STORM & DRAINAGE

SECTION 4



515 Warrenville Rd. • Lisle, IL 60532
(630) 271-0770 • (630) 271-0774 Fax

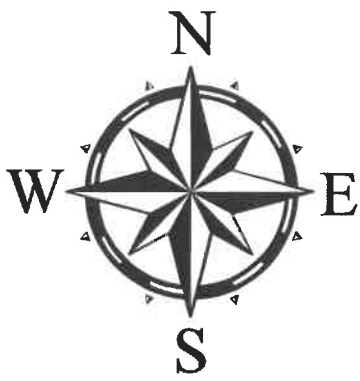


Legend

- 6in
- 8in
- 10in
- 12in
- 15in
- 16in
- 18in
- 21in
- 24in
- 26in
- 27in
- 30in
- 35in
- 36in
- 38in
- 42in
- 48in
- 60in
- 72in
- Unknown
- Structures

Sources: Esri, HERE, Garmin, USGS, Intermap, INCREMENT P, NRCan, Esri Japan, METI, Esri China (Hong Kong), Esri Korea, Esri (Thailand), NGCC, (c) OpenStreetMap contributors, and the GIS User Community

WINFIELD TOWNSHIP HIGHWAY DEPARTMENT
JOHN S. DUSZA- HIGHWAY COMMISSIONER



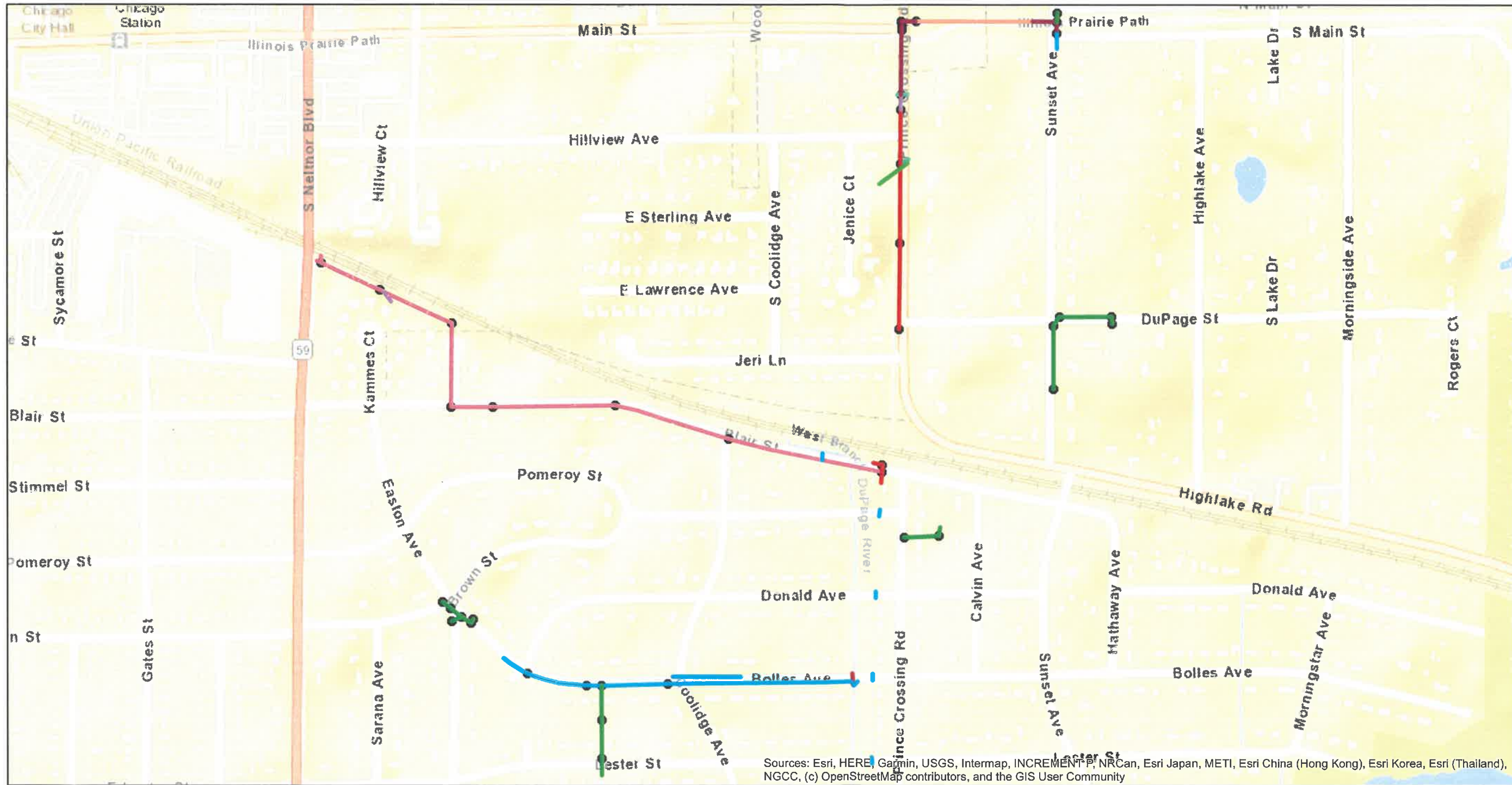
LOCATION EXHIBIT

WINFIELD TOWNSHIP 2018 ROAD DISTRICT ASSET MANAGEMENT STORM & DRAINAGE

SECTION 5



515 Warrenville Rd. • Lisle, IL 60532
(630) 271-0770 • (630) 271-0774 Fax



Legend

- 6in
- 8in
- 10in
- 12in
- 15in
- 16in
- 18in
- 21in
- 24in
- 26in
- 27in
- 30in
- 35in
- 36in
- 38in
- 42in
- 48in
- 60in
- 72in
- Unknown
- Structures

Sources: Esri, HERE, Garmin, USGS, Intermap, INCREMENT P, NRCan, Esri Japan, METI, Esri China (Hong Kong), Esri Korea, Esri (Thailand), NGCC, (c) OpenStreetMap contributors, and the GIS User Community

WINFIELD TOWNSHIP HIGHWAY DEPARTMENT
JOHN S. DUSZA- HIGHWAY COMMISSIONER